

Oboe

# Полярная звезда

Tempo rubato **A** 9 **B** 2 A Tempo **C** 4

16 14

46 3 **D**

51 17

70 3 **E**

76 2 4 **F** 2 Adagio 6

Trumpet I in B

Полярная звезда

Tempo rubato   **A**   **9**   **B**   **2**   A Tempo

**16**   **14**

**C**   **8**   **D**   **1**   **22**   **E**   **2**

42

*mf*

**F**   **Adagio**   con sord.   **3**

79

Trumpet II in B

Полярная звезда

Tempo rubato   **A**   9   **B**   2   A Tempo

16   14

42   **C**   8   **D**   1   22   **E**   2   *mf*

79   **F**   Adagio con sord.   3

Trumpet III in B

Полярная звезда

Tempo rubato **A** 9 **B** 2 A Tempo **C** 8

16 14

**D** 1 22 **E** 2

50 *mf*

**F** *Adagio* con sord. 3

79

Trumpet in B

Полярная звезда

Tempo rubato   **A**   9   **B**   2   A Tempo

**C**   8   **D**   2   16   22   **E**   2   14

42

**F**   *mf*   1   Adagio

79

6

## Electric Guitar

## Полярная звезда

**Tempo rubato** **A** 9 **B** 2 **A Tempo**

**16**

**C**

**D**

**E**

**F**

**2**

**Adagio**

**2**

**rit.**

**mf**

**f**

**A7**

**D Maj**

**C#min**

**F#min7**

**G#9**

**C#min**

**F#7**

**G#9**

**C#min7**

**F#min7**

**B9**

**EMaj7**

**E7**

**AMaj7**

**B7**

**EMaj7**

**D#min7**

**G#7(b9)**

**C#7**

**C#7**

**F#min7**

**G#7(b9)**

**C#min7**

**E/B**

**F#Bb**

**C#min/A**

**G#7**

**C#min**

**F#min7**

**B7**

**C#min**

**F#min7**

**G#7**

**C#min7**

**F#min7**

**B7**

**E9**

**A9**

**D9**

**D#m74**

**A9sus4**

**A7**

**Dmin**

**Gmin7**

**A9**

**Dmin**

**G7**

**A9**

**Dmin7**

**Gmin7**

**C9**

**FMaj7**

**F7**

**BbMaj**

**C7**

**FMaj7**

**Emin7**

**A7(b9)**

**D7**

**D7**

**Gmin7**

**A7(b9)**

**Dmin7**

**G**

**Gmin/Bb**

**A7**

**Dmin**

**Gmin7**

**C7**

**Dmin**

**Gmin7**

**A7**

**Dmin7**

**Gmin7**

**C7**

**F9**

**Bb9**

**E9**

**Emin7**

**A7**

**E9**

**Emin7**

**A9**

**Gmin7**

**C7**

**Dmin**

**Gmin7**

**A7**

**Dmin7**

**Gmin7**

**C7**

**F9**

**Bb9**

**E9**

**Emin7**

**A7**

**rit.**

**Adagio**

**D Maj**

# Bass Guitar

# Полярная звезда

# Tempo rubato

**A**

9

**B**

**2**

## A Tempo

16

$$mf$$

30

35

40

44

49

53

58

63

68

73

78

83

*rit.*

# Adagio

*p*

o

# Полярная звезда

Tempo rubato

Celesta

14 **A** 9 **B** 2



A Tempo

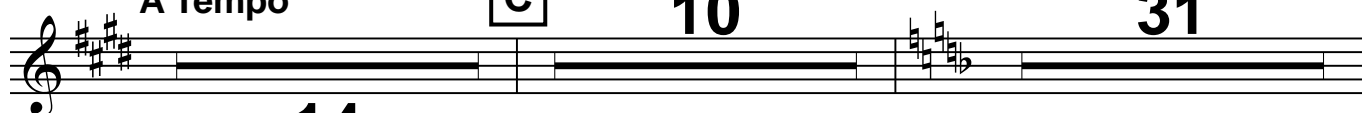
**C**

10

31

28

14

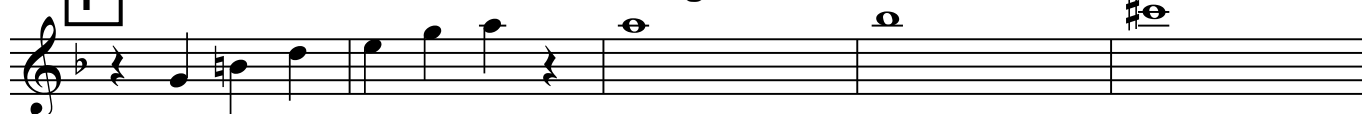


**F**

*rit.*

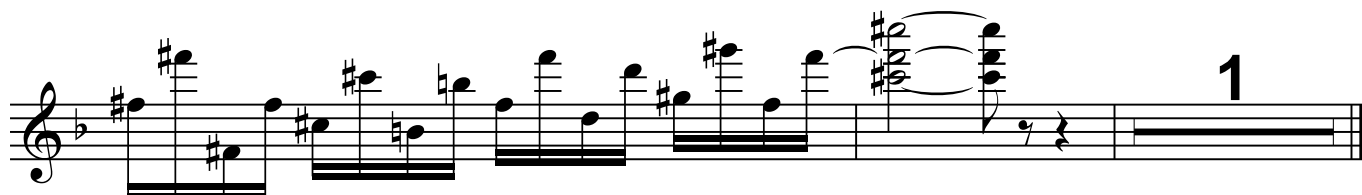
Adagio

83



88

1





# Drums

## Полярная звезда

Tempo rubato

Wind chimes Bass Drum Rimshot Snare Drum Hi-hat Hi-hat open or accent

Tomms Tomms Tomms 1 Crash Ride 4 A 9 B 2

A Tempo

28 35 40 45 50 56 63 68 73 78 83

C D E F

rit. Adagio

4

# Timpani

## Полярная звезда

Tempo rubato

Cis, D, E, A

**A**

**9**

**B**

**2**

A Tempo

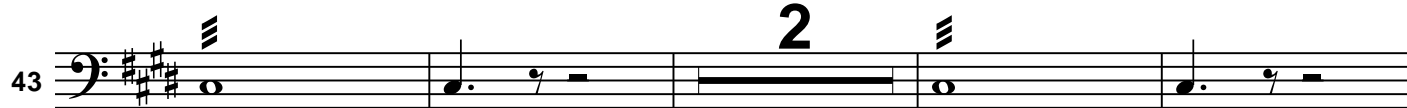
**C**

**1**



**16**

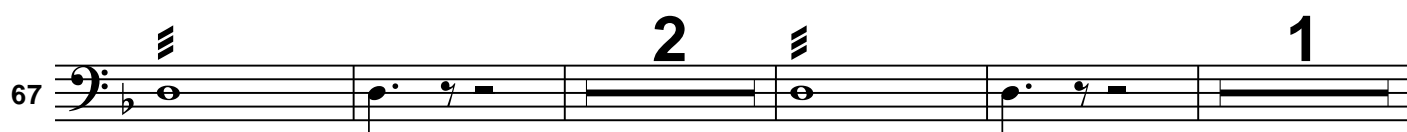
**14**



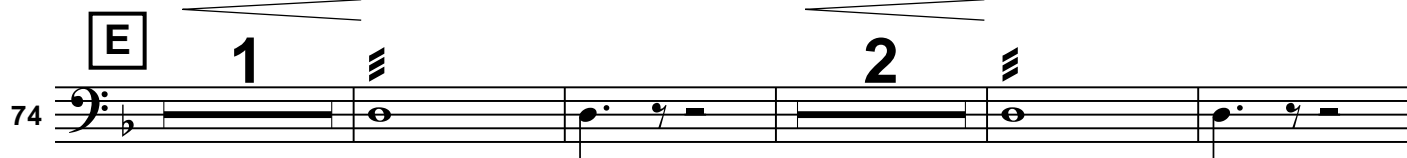
43



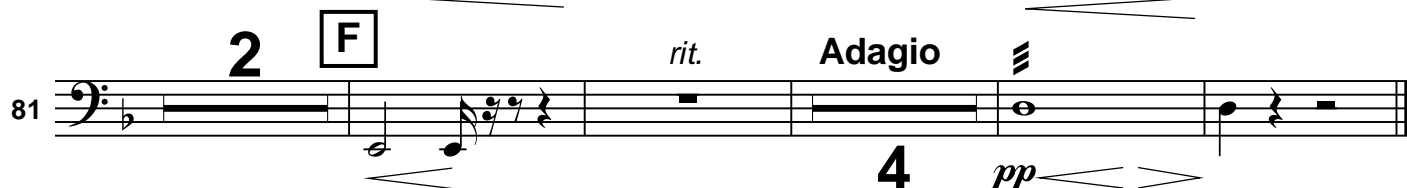
49



67



74



81

**4**

*pp*

# Chorus

## Полярная звезда

Tempo rubato   **A**   9   **B**   2   A Tempo

**C**   8   16   **D**   2   22   **E**   14   2

42

76   A...

**F**   *rit.*   Adagio   3

83

## Violin I

## Полярная звезда

Tempo rubato 14 **A** 9 **B** 2

*mf*

**A** Tempo

*mp dolce*

28

34

*mf* **C**

40

*mp* *cresc.*

44

*mf espress.* 3

49 **D** *mf espress.* 3

53

58 *mf* 3 *cresc.*

64 *mp* 3 *mf* *cresc.*

68 *f espress.* 3 *cresc.*

73 **E** *f espress.* 3

78

**F** rit. Adagio

83 *mp* *mp* *p*

The image shows a page of a musical score for Violin I. The title is 'Полярная звезда' (Polar Star). The score is written in treble clef with a key signature of three sharps (F#, C#, G#) and a common time signature (C). It begins with a 'Tempo rubato' marking and a measure rest of 14 measures, followed by a section labeled 'A' (9 measures) and another section labeled 'B' (2 measures). The main body of the score starts at measure 28 with a 'Tempo' marking. The dynamics range from mezzo-forte (mf) to fortissimo (f), with various markings like 'dolce', 'espress.', and 'cresc.'. The score includes many triplet markings (indicated by a '3' over a group of notes) and slurs. There are six boxed section markers: A, B, C, D, E, and F. The score concludes at measure 83 with a 'rit.' (ritardando) marking and a change to 'Adagio' tempo. The key signature changes to two flats (Bb, Eb) at measure 83. The final dynamics are mezzo-piano (mp) and piano (p).

## Violin II

## Полярная звезда

Tempo rubato

14 **A** 9 **B** 2

*mf*

**A** Tempo

28 *mp dolce*

34

39 **C** *mp* *cresc.*

44 *mf espress.* 3 *mf espress.*

49 **D** 3 *mf espress.*

53 3

58 *mf* *cresc.* 3

63 *mp* 3 *mf cresc.*

68 *f espress.* 3 *cresc.*

73 **E** *f espress.* 3

78 3 *f*

**F** rit. Adagio

83 *mp* *mp* 8 *p*

The image shows a page of a musical score for Violin II. The title is 'Полярная звезда' (Polar Star). The score is written in treble clef with a key signature of three sharps (F#, C#, G#) and a common time signature (C). It begins with a 'Tempo rubato' marking. The first staff has a measure with a half note G#4, followed by a measure with a half note A4, and then a measure with a half note B4. Above the staff, there are three measures with whole notes: 14, A, 9, B, 2. The second staff starts at measure 28 with a half note G#4, followed by a half note A4, and then a half note B4. The third staff starts at measure 34 with a half note G#4, followed by a half note A4, and then a half note B4. The fourth staff starts at measure 39 with a half note G#4, followed by a half note A4, and then a half note B4. The fifth staff starts at measure 44 with a half note G#4, followed by a half note A4, and then a half note B4. The sixth staff starts at measure 49 with a half note G#4, followed by a half note A4, and then a half note B4. The seventh staff starts at measure 53 with a half note G#4, followed by a half note A4, and then a half note B4. The eighth staff starts at measure 58 with a half note G#4, followed by a half note A4, and then a half note B4. The ninth staff starts at measure 63 with a half note G#4, followed by a half note A4, and then a half note B4. The tenth staff starts at measure 68 with a half note G#4, followed by a half note A4, and then a half note B4. The eleventh staff starts at measure 73 with a half note G#4, followed by a half note A4, and then a half note B4. The twelfth staff starts at measure 78 with a half note G#4, followed by a half note A4, and then a half note B4. The thirteenth staff starts at measure 83 with a half note G#4, followed by a half note A4, and then a half note B4. The score includes various dynamic markings such as *mf*, *mp*, *f*, *p*, *cresc.*, and *espress.*. It also includes performance instructions like 'Tempo rubato', 'Tempo', 'rit.', and 'Adagio'. There are several boxed letters (A, B, C, D, E, F) and numbers (14, 9, 2, 8) indicating specific measures or sections. The score is written in a standard musical notation with notes, rests, and bar lines.

## Viola

## Полярная звезда

Tempo rubato

14 **A** 9 **B** 2

*mf*

**A** Tempo

*mp dolce*

28

34

**C**

39

*mp* *cresc.*

44

**D** *mf* *espress.*

*mf* *espress.*

50

*mf* *espress.*

6

55

3

60

*mf* *cresc.* *mp*

66

*cresc.* *f* *espress.*

72

*cresc.* *f* *espress.*

**E**

**F** *rit.* *mp*

*f*

**Adagio**

85

*mp* *p*

Violoncello

Полярная звезда

Tempo rubato

14 **A** 9 **B** 2

*mf*

**A** Tempo

*mp dolce*

28

35

**C**

*mp* *cresc.* *mf* *espress.*

40

45

**D**

*mf* *espress.*

50

55

60

*mf* *cresc.* *mp*

66

*cresc.* *f* *espress.*

**E**

72

*cresc.* *f* *espress.*

77

**F**

*rit.* **Adagio**

83

*mp* *mp* *p*

# Contrabass

## Полярная звезда

Tempo rubato  
pizz.

14 **A** 9 **B** 2



A Tempo

**C**

8

**D**

1

arco

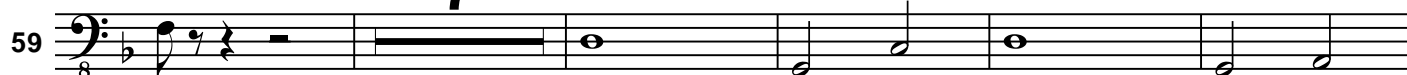


pizz.



7

arco



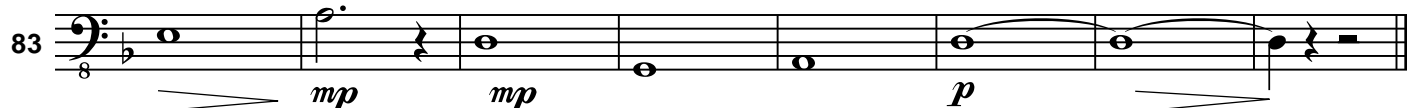
**E**



**F**

rit.

Adagio





# Clarinet I in A

## Полярная звезда

## Tempo rubato

**A**

9

B

2

## A Tempo

16

3

1

2

**C**

4

# 2

**D**

3

---

6

**2**

**E**

# 2

# 3

**F**

## Adagio

6

Clarinet II in A

Полярная звезда

Tempo rubato **A** 9 **B** 2 A Tempo **C** 5

16 14

47 2

**D** 1 18

50

71 2

**E** 1 3

74

79 3 **F** 2 Adagio 6

## Flute I

## Полярная звезда

[illegible]

Flute II

# Полярная звезда

Tempo rubato **A** 9 **B** 2 A Tempo

16 5

35 *mf* 6 6 6 6

38

40 2 **C** 4

47 2

50 **D** 1 10

63 6

71 2

74 **E** 6 2

79 3 **F** 2 Adagio 6

Harp

# Полярная звезда

Tempo rubato

14 **A** 9 **B** 2 A Tempo **C** 1

43

51

71

79

88

89

Horn I in F

Полярная звезда

Tempo rubato **A** 9 **B** 2 A Tempo **C** 2

16 14

44 *mf* *mf*

**D** 7

49

61 6 1

2 **E** 9 **F** 2 Adagio

72 6

Horn II in F

Полярная звезда

Tempo rubato **A** 9 **B** 2 A Tempo **C** 2

16 14

44 *mf* **D** 15 *mf*

49 1 2

67 **E** 9 **F** 2 Adagio 6

74

Horn III in F

Полярная звезда

Tempo rubato **A** 9 **B** 2 A Tempo **C** 2

16 14

44 *mf* *mf*

**D** 15

49

67 1 2

**E** 9 **F** 2 Adagio 6

74

Detailed description of the musical score: The score is for Horn III in F. It begins with a rehearsal mark at measure 16, labeled 'Tempo rubato' and 'A Tempo'. The first staff contains measures 16 and 14, with sections A (9 measures), B (2 measures), and C (2 measures). The second staff starts at measure 44 with a mezzo-forte (mf) dynamic. The third staff starts at measure 49 with a mezzo-forte (mf) dynamic. The fourth staff starts at measure 67 with a mezzo-forte (mf) dynamic. The fifth staff starts at measure 74 with a mezzo-forte (mf) dynamic. The score includes various musical notations such as rests, notes, and dynamics.



Percussion

Полярная звезда

Tempo rubato

	14	A	9	B	2
Shaker					
Triangle					
Tambourine	14		9		2
Piatti	14		9		2

28 A Tempo

Sh. Tambourine

T-ne

33

Sh.

T-ne

38 C

Sh.

T-ne

43

Sh.

T-ne

48 D

Sh.

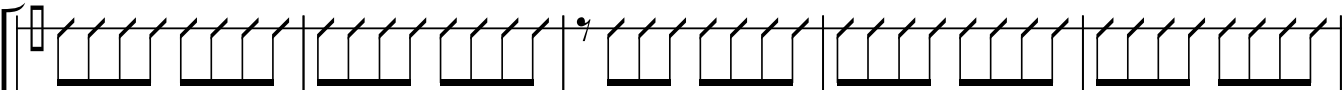
T-ne

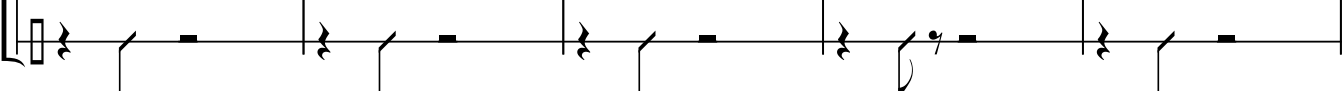
53

Sh.

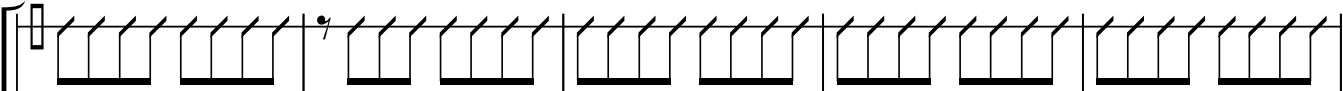
T-ne

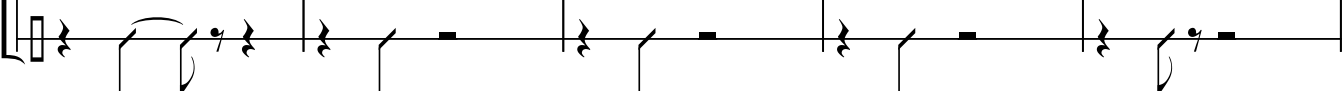
58

Sh. 

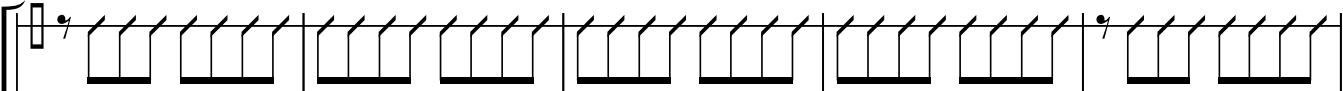
T-ne 

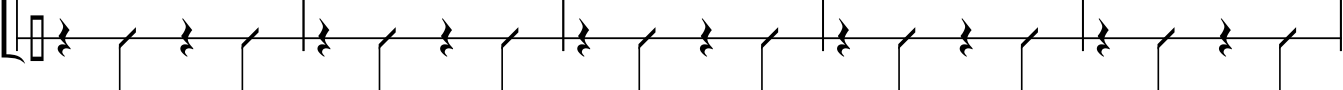
63

Sh. 

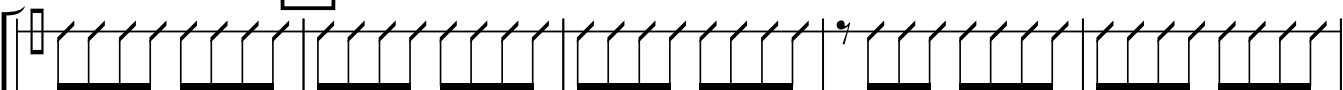
T-ne 

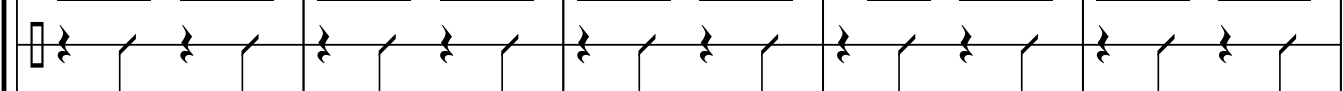
68

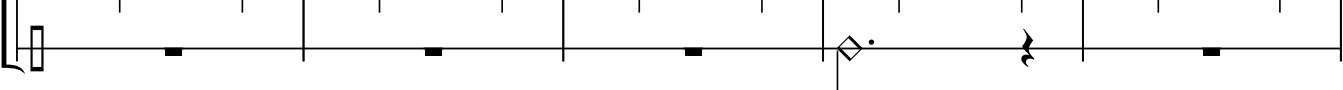
Sh. 

T-ne 

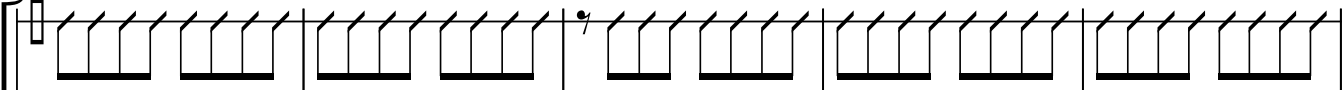
73 **E**

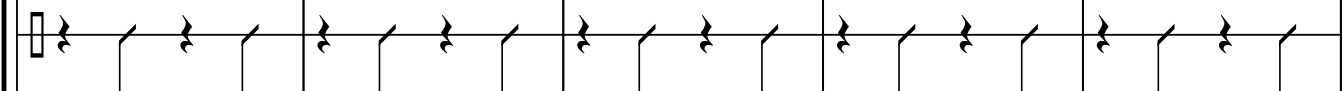
Sh. 

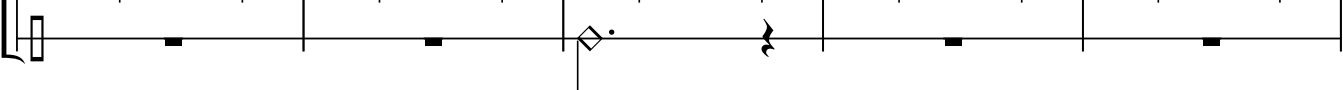
T-ne 

P-ti 

78

Sh. 

T-ne 

P-ti 

83 **F**

*rit.*

Adagio

Wind chimes

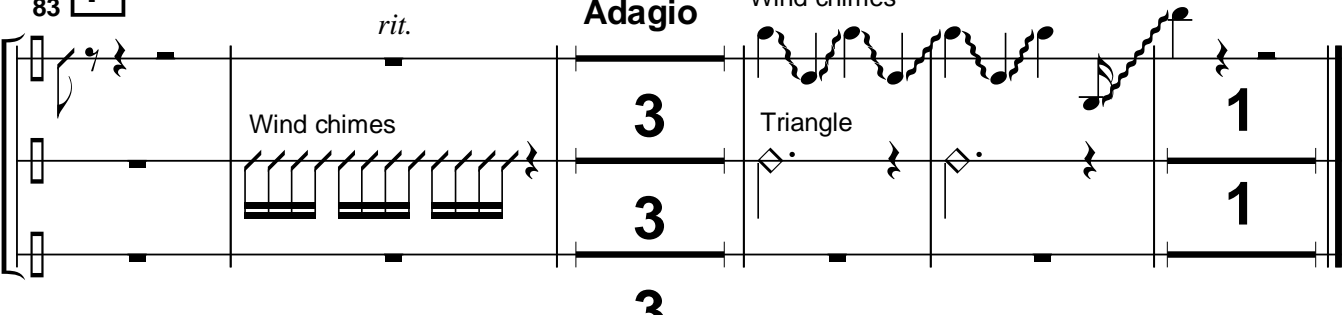
Triangle

3

1

1

3



Piano

# Полярная звезда

Tempo rubato

This piano score is for the piece "Полярная звезда" (Polar Star) in F# major, 4/4 time, with a tempo rubato. The score is written for piano and includes various musical notations such as chords, triplets, and dynamic markings.

The score is divided into systems, with measure numbers 6, 11, 15, 19, and 23 indicated on the left. The key signature is F# major (three sharps: F#, C#, G#). The time signature is 4/4.

**System 1 (Measures 1-5):** Starts with a *mf* dynamic. Chords include C#m7, F#m7, and G#9-.

**System 2 (Measures 6-10):** Features triplets and chords E+7 and E7.

**System 3 (Measures 11-14):** Includes a triplet and chords EMaj and C#9. A *sf* (sforzando) marking is present.

**System 4 (Measures 15-18):** Marked with a box **A**. Includes a triplet and chords F#m7, C#m, F#/A#, F#/A, G#7, and C#m. The instruction *espress.* (espressivo) is written above the staff.

**System 5 (Measures 19-22):** Includes a triplet and chords F#m7 and C#m.

**System 6 (Measures 23-26):** Marked with a box **B**. Includes a triplet and chords F#m7 and D#m7. A *poco* (poco) marking is present.

# A Tempo

27 

32 

38 

43 

49 

53 

57 

61 

65 

70 

76 

82 

88 

## Trombone I

## Полярная звезда

Tempo rubato

A

9

B

2

A Tempo

C

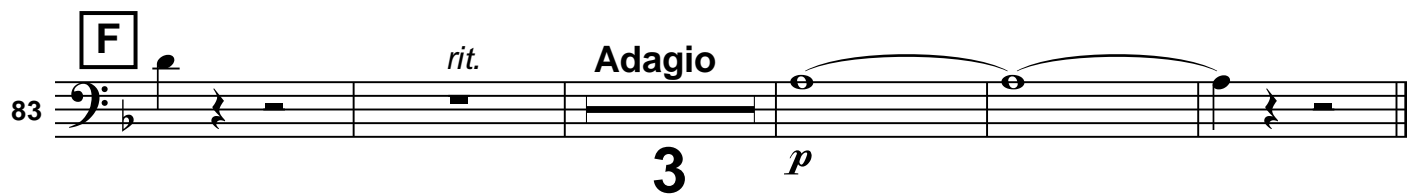
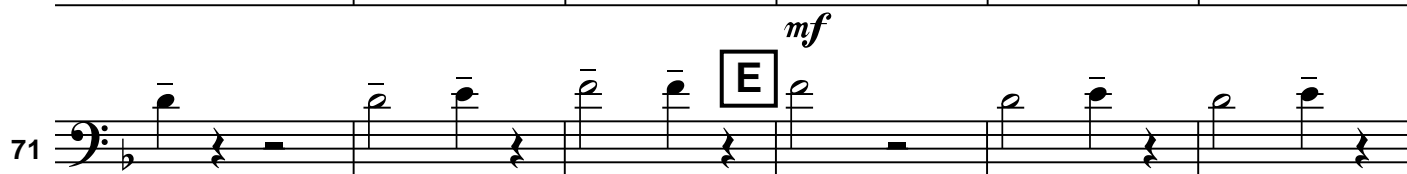
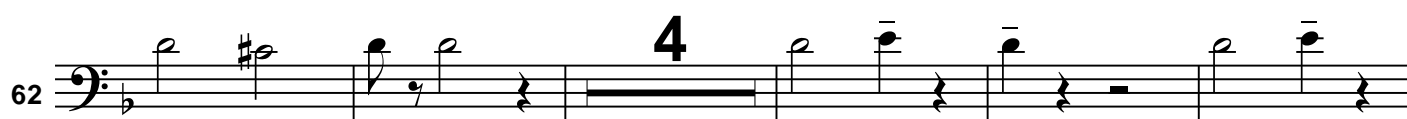
8

D

1

16

14



# Trombone II

## Полярная звезда

Tempo rubato

**A**

9

**B**

2

A Tempo

**C**

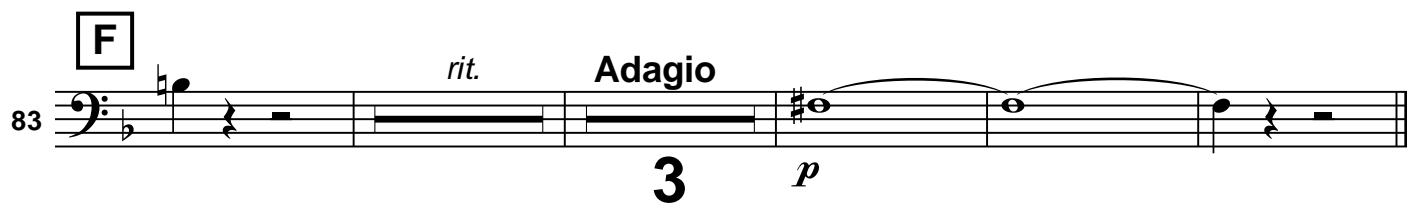
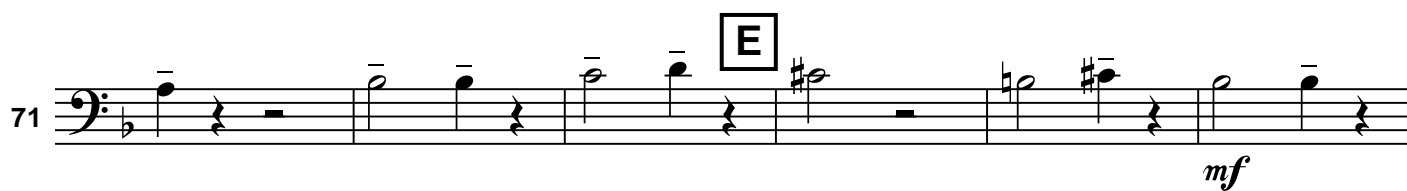
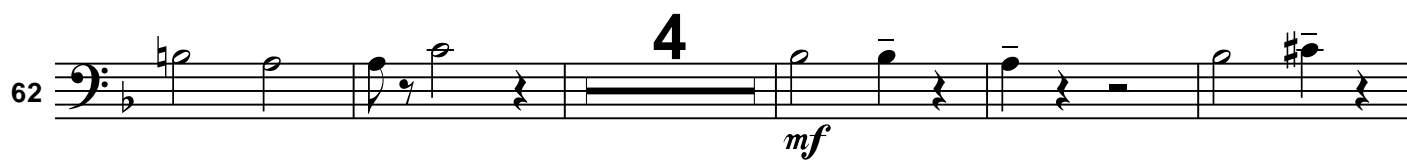
8

**D**

1

16

14



## Trombone III

## Полярная звезда

Tempo rubato **A** 9 **B** 2 A Tempo **C** 8 **D** 1

16 14

51

56

62 4

*mf* **E**

71 *mf*

77

**F** *rit.* Adagio

83 *p* 3